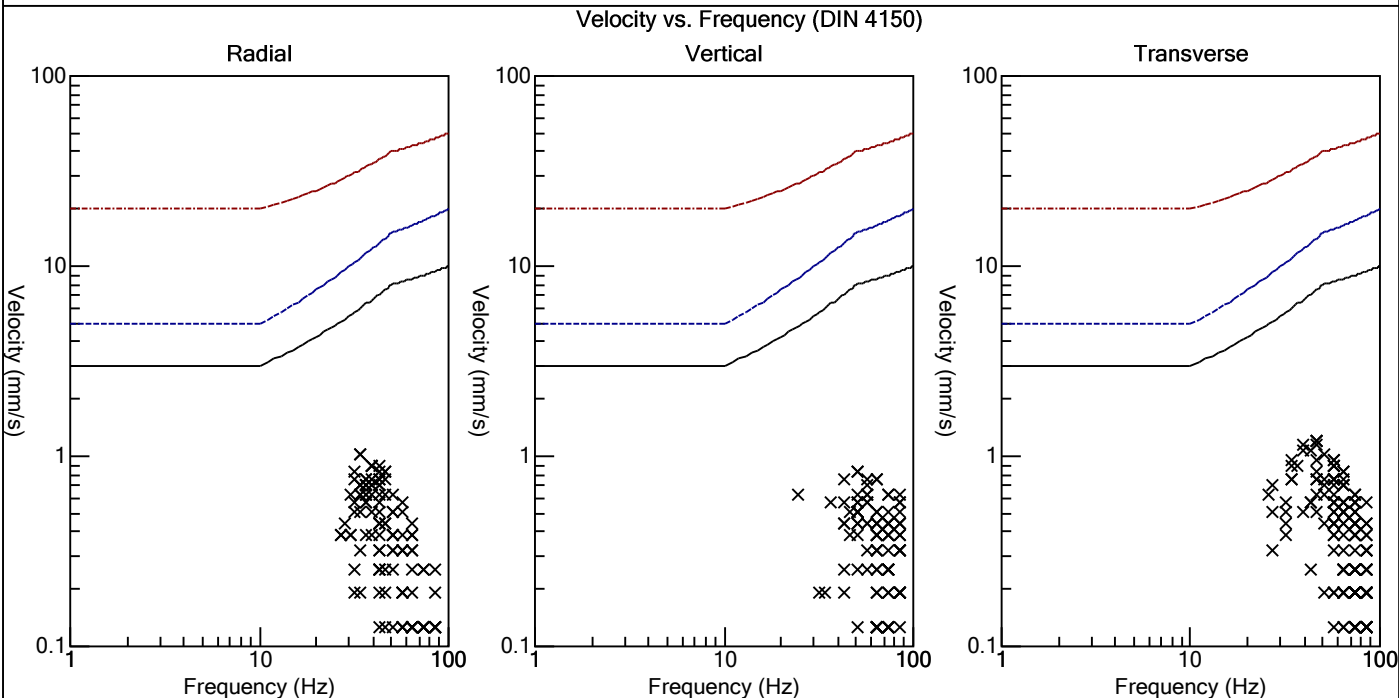
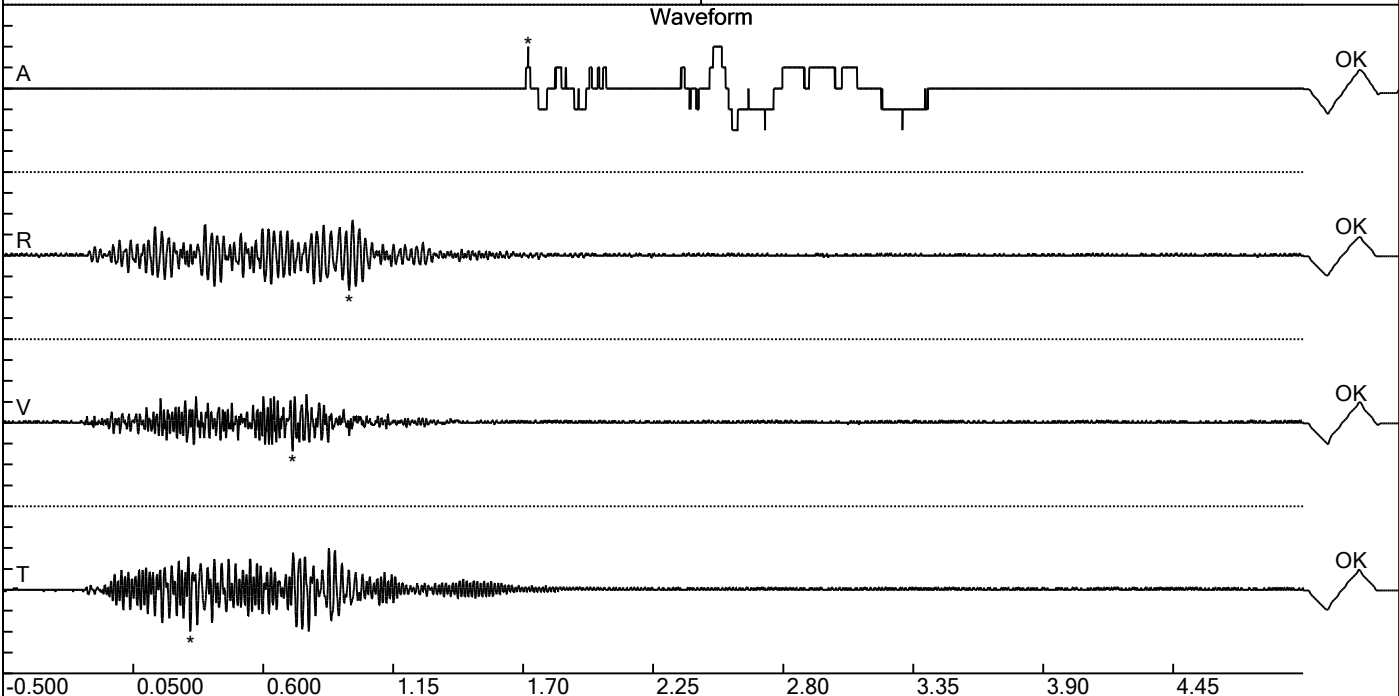


Carrière de BRS  
 Approfondissement -30 - phase 1  
 Tir du 24/09/2018  
 Sismographe placé au  
 261 Halleux  
 4710 Comblain-au-Pont

Record: 2164201809241455122.dtb  
 Number: 122  
 Seismograph: Mini-Seis  
 Type of Record: Waveform  
 Date: 24-09-18 14:55:00  
 SN: 2164  
 Duration: 5.50 Seconds  
 Sample Rate: 1024  
 Pre-Trigger: 0.5 Seconds  
 Seismic Trigger: 0.508 mm/s  
 Acoustic Trigger: 142.1 dB  
 Voltage: 6.3

Peaks and Frequencies	Graph Information
PPV Maximum: 1.21 mm/s A: 106.0 dB @ 51.2 Hz (1.72 s) R: 1.02 mm/s @ 34.1 Hz (0.964 s) V: 0.826 mm/s @ 51.2 Hz (0.725 s) T: 1.21 mm/s @ 46.5 Hz (0.292 s) Last Calibration Date: 21	Time Range: -0.500 s to 5.00 s Acoustic Scale: 0.0200 Mb/div Seismic Scale: 0.605 mm/s/div Time Intervals: 0.550 Seconds



Carrière de BRS  
 Approfondissement -30 - phase 1  
 Tir du 24/09/2018  
 Sismographe placé au  
 261 Halleux  
 4710 Comblain-au-Pont

Record: 2164201809241455122.dtb  
 Number: 122  
 Seismograph: Mini-Seis  
 Type of Record: Waveform  
 Date: 24-09-18 14:55:00  
 SN: 2164  
 Duration: 5.50 Seconds  
 Sample Rate: 1024  
 Pre-Trigger: 0.5 Seconds  
 Seismic Trigger: 0.508 mm/s  
 Acoustic Trigger: 142.1 dB  
 Voltage: 6.3

Peaks and Frequencies	Graph Information
PPV Maximum: 1.21 mm/s A: 106.0 dB @ 51.2 Hz (1.72 s) R: 1.02 mm/s @ 34.1 Hz (0.964 s) V: 0.826 mm/s @ 51.2 Hz (0.725 s) T: 1.21 mm/s @ 46.5 Hz (0.292 s) Last Calibration Date: 21	Time Range: -0.500 s to 5.00 s Acoustic Scale: 0.0200 Mb/div Seismic Scale: 0.605 mm/s/div Time Intervals: 0.550 Seconds

